



IMPORTANT NOTICE - READ CAREFULLY

Installation Instructions

Washer Kit 8403BW for use on HDPE SDR's 9-17 only

Use Belleville washer in orientation shown in Fig. 1 on each bolt and assembly like Fig. 2 then torque to spec.

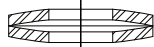


FIG 1

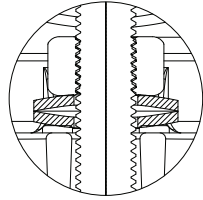


FIG 2

3/22

800-292-2737 | sales@aymcdonald.com | aymcdonald.com

3210-585



IMPORTANT NOTICE - READ CAREFULLY

Installation Instructions

Washer Kit 8403BW for use on HDPE SDR's 9-17 only

Use Belleville washer in orientation shown in Fig. 1 on each bolt and assembly like Fig. 2 then torque to spec.

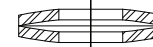


FIG 1

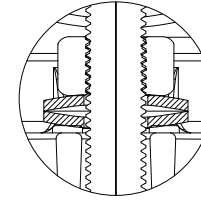


FIG 2

3/22

800-292-2737 | sales@aymcdonald.com | aymcdonald.com

3210-585



IMPORTANT NOTICE - READ CAREFULLY

Installation Instructions

Washer Kit 8403BW for use on HDPE SDR's 9-17 only

Use Belleville washer in orientation shown in Fig. 1 on each bolt and assembly like Fig. 2 then torque to spec.

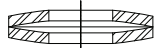


FIG 1

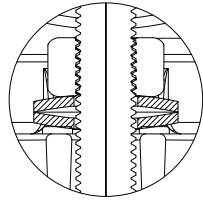


FIG 2

3/22

800-292-2737 | sales@aymcdonald.com | aymcdonald.com

3210-585



IMPORTANT NOTICE - READ CAREFULLY

Installation Instructions

Washer Kit 8403BW for use on HDPE SDR's 9-17 only

Use Belleville washer in orientation shown in Fig. 1 on each bolt and assembly like Fig. 2 then torque to spec.



FIG 1

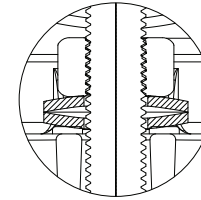


FIG 2

3/22

800-292-2737 | sales@aymcdonald.com | aymcdonald.com

3210-585



IMPORTANT NOTICE - READ CAREFULLY

Installation Instructions

Washer Kit 8403BW for use on HDPE SDR's 9-17 only

Use Belleville washer in orientation shown in Fig. 1 on each bolt and assembly like Fig. 2 then torque to spec.



FIG 1

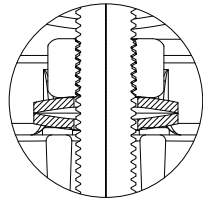


FIG 2

3/22

800-292-2737 | sales@aymcdonald.com | aymcdonald.com

3210-585



IMPORTANT NOTICE - READ CAREFULLY

Installation Instructions

Washer Kit 8403BW for use on HDPE SDR's 9-17 only

Use Belleville washer in orientation shown in Fig. 1 on each bolt and assembly like Fig. 2 then torque to spec.



FIG 1

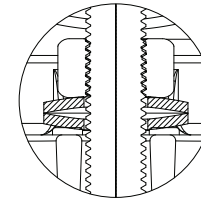


FIG 2

3/22

800-292-2737 | sales@aymcdonald.com | aymcdonald.com

3210-585